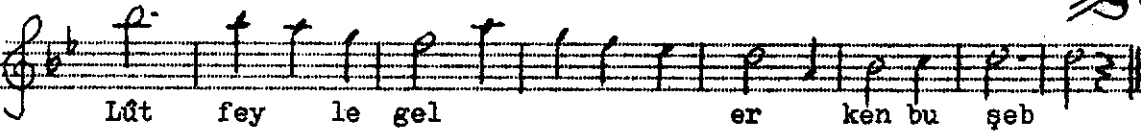
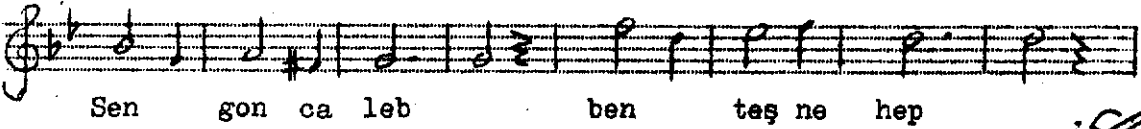
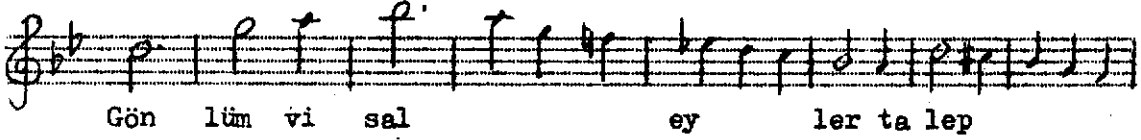
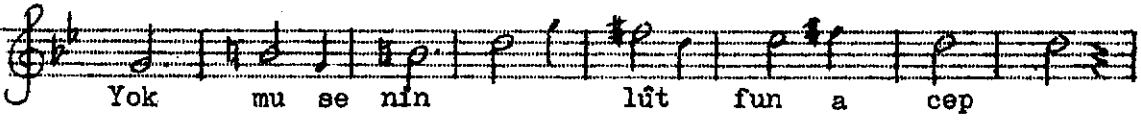
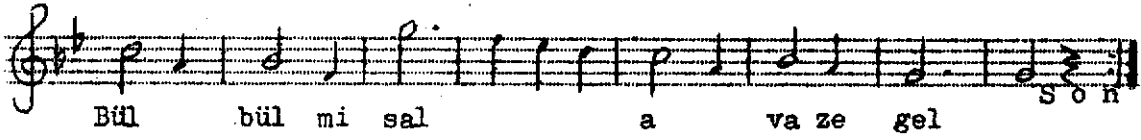
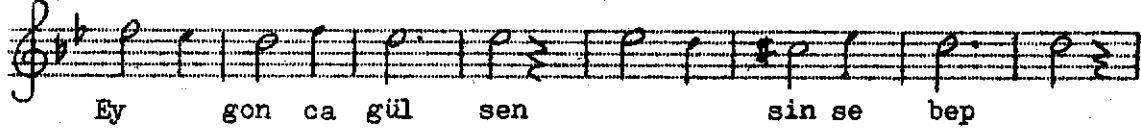
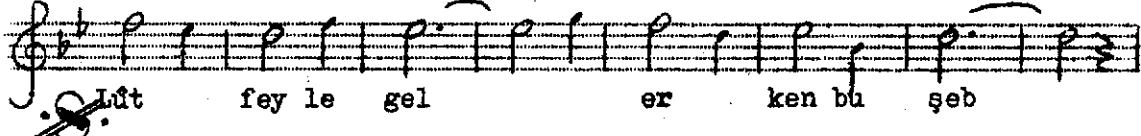


NİHAVENT. ŞARKI

Semai

Refik FERSAN



GÜRSEL

Sen gonca leb, ben teşne hep
Lûtfeyle gel erken bu şeb
Ey gonca gül sensin sebep
Bülbül misal âvâze gel

Yok mu senin lûtfun acep
Gönlüm visal eyler talep
Sen ganca leb ben teşne hep
Lûtfeyle gel erken bu şeb

(Reşat Özpırınçci)